

## 16B Metal hoods/housings - for high voltage inserts(HVE Series)

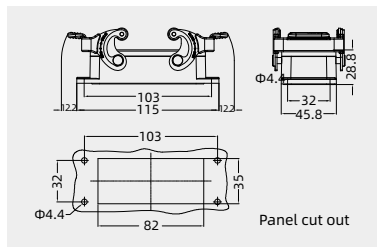
Degree of protection: IP65

### Bulkhead mounted housings



Thread	Designation	Order No.
---	HV16B-BK-2L/SC	124 016 341 1001

Please refer to page 15-02 for choosing proper model of lock.

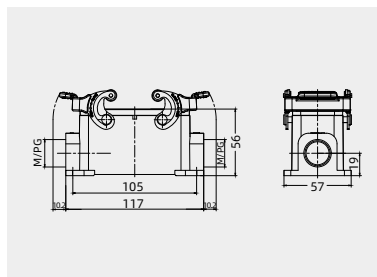


### Surface mounted housings



Thread	Designation	Order No.
M25	HV16B-SF-2L/SC-M25	124 016 241 1003
2M25	HV16B-SF-2L/SC-2M25	124 016 241 1023
PG21	HV16B-SF-2L/SC-PG21	124 016 241 1011
2PG21	HV16B-SF-2L/SC-2PG21	124 016 241 1031

Please refer to page 15-02 for choosing proper model of lock.

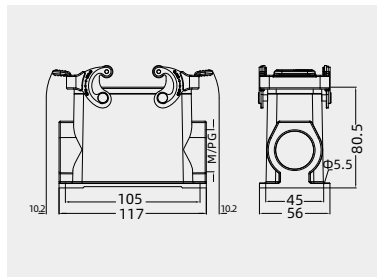


### Surface mounted housings, high construction



Thread	Designation	Order No.
M32	HV16B-SFH-2L/SC-M32	124 016 241 5004
2M32	HV16B-SFH-2L/SC-2M32	124 016 241 5024
PG21	HV16B-SFH-2L/SC-PG21	124 016 241 5011
2PG21	HV16B-SFH-2L/SC-2PG21	124 016 241 5031
PG29	HV16B-SFH-2L/SC-PG29	124 016 241 5012
2PG29	HV16B-SFH-2L/SC-2PG29	124 016 241 5032

Please refer to page 15-02 for choosing proper model of lock.



### Surface mounted housings, high construction



Thread	Designation	Order No.
M25	HV16B-CCT-2L/SC-M25	124 016 741 1003
PG21	HV16B-CCT-2L/SC-PG21	124 016 741 1011

Please refer to page 15-02 for choosing proper model of lock.

